

ROTATE YOUR SCREEN



FOR BETTER EXPERIENCE

A PROJECT BY PRIMARK

INSPIRA

LIVE INSPIRED. LIVE ICONIC.

LUXURY RESIDENCES

———— MIYAPUR ————

1
MINS

NARENN
GARDENS

2
MINS

DMART

5
MINS

MIYAPUR
METRO
STATION

15
MINS

HITEC
CITY

THE ICON OF
INSPIRED LIVING

@MIYAPUR





GATEWAY TO INSPIRATION



THE ICON OF INSPIRED LIVING @ MIYAPUR 

INSPIRA
LIVE INSPIRED. LIVE ICONIC.

FLOORS



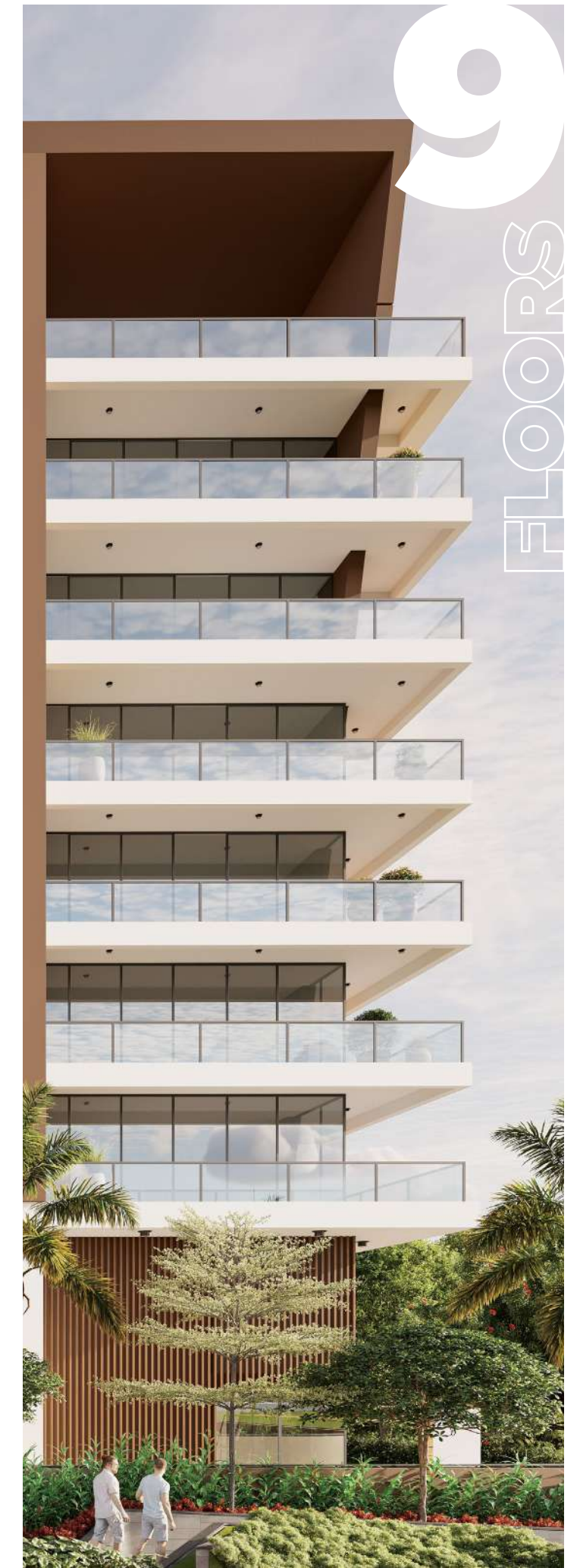
TOWERS



FAMILIES

2 & 3 BHK APARTMENTS

CLUBHOUSE



MASTER PLAN

LEGEND

- | | | | |
|----|--|----|-------------------------------------|
| 1 | CLUBHOUSE ENTRY | 19 | CYCLING TRACK |
| 2 | CLUBHOUSE ENTRANCE WATER BODY | 20 | PLAY COURT |
| 3 | WATER BODY WITH SCULPTURE | 21 | YOGA LAWN |
| 4 | PARTY LAWN | 22 | YOGA DECK |
| 5 | RAISED DECK | 23 | SEATING DECK WITH COVERED STRUCTURE |
| 6 | STAGE | 24 | PRIVATE LAWN |
| 7 | AMPHITHEATER | 25 | SKATING RINK |
| 8 | PET PARK | 26 | SEATER |
| 9 | CENTRAL PLAZA | 27 | LAWN FOR CLUBHOUSE |
| 10 | CENTRAL LINEAR WATER BODY WITH SCULPTURE | 28 | VOLLEYBALL COURT |
| 11 | PLANTER BOXES | 29 | HALF BASKETBALL COURT |
| 12 | CHILDREN'S PLAY AREA | 30 | KIDS' SEATING AREA |
| 13 | LAWN | 31 | BLOCK ENTRANCE CANOPY |
| 14 | MULTIPURPOSE COURT | 32 | ENTRANCE & EXIT |
| 15 | FITNESS STATION | 33 | DRIVEWAY |
| 16 | CRICKET PRACTICE NET | 34 | FEATURE WALL |
| 17 | BLOCK ENTRANCE WATER BODY | 35 | ENTRANCE SCULPTURE |
| 18 | PEDESTRIAN PATHWAY | | |





COURTYARD

FIND YOUR DRIVE 
AT THE HEART OF IT ALL

The right environment can motivate anyone. And so, we built Inspira Central at the core of this lavish gated community to rouse you in every way possible. The long, serene and vehicle-free zone is a safe space for children to play, communal harmony to flourish and personal growth to take centre stage.

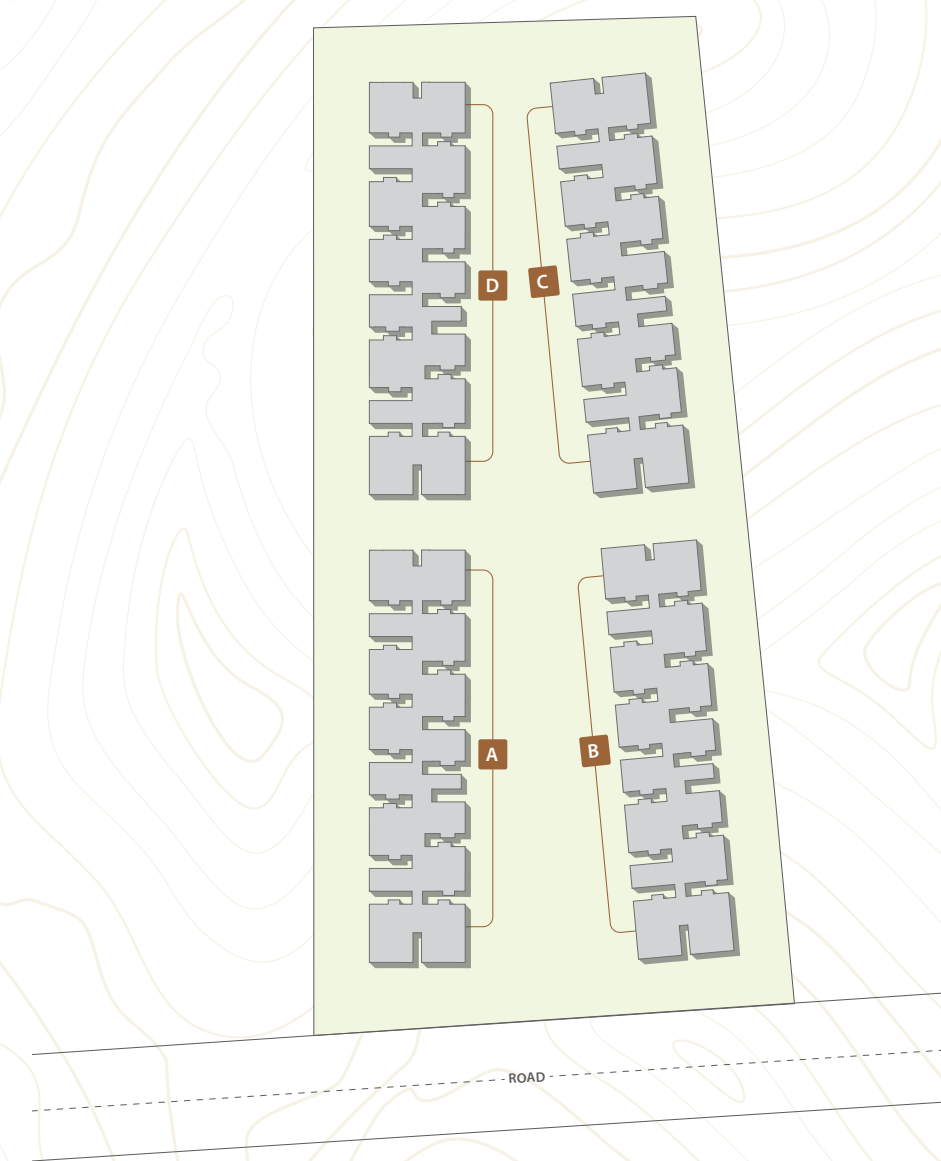
TYPICAL FLOOR PLAN

(BLOCK - A, B, C, D)

AREA STATEMENT

BLOCK - A, B, C, D					
FLAT NO.	FACING	TYPE	CARPET AREA	PLINTH AREA	SALEABLE AREA
01	West	3 BHK	1410	1859	2325 Sft
02	East	3 BHK	1365	1859	2325 Sft
03	East	3 BHK	1095	1313	1640 Sft
04	East	2 BHK	725	993	1240 Sft
05	East	3 BHK	975	1163	1455 Sft
06	East	3 BHK	1025	1236	1545 Sft
07	East	3 BHK	1165	1621	2025 Sft
08	West	3 BHK	1220	1621	2025 Sft
09	West	3 BHK	1100	1379	1725 Sft
10	West	3 BHK	975	1229	1535 Sft
11	West	2 BHK	750	973	1215 Sft
12	West	2 BHK	750	973	1215 Sft
13	West	3 BHK	1030	1295	1620 Sft

KEY PLAN



CLUBHOUSE

A M E N I T I E S

GRAND ENTRANCE WITH WAITING LOBBY

SUPERMARKET

MULTI-PURPOSE HALLS

CAFETERIA

GYM

INDOOR GAMES

YOGA

SPA

MINI-THEATER

TRAINING ROOM / CO-WORKING SPACE

GUEST ROOMS

ROOF-TOP INFINITY POOL

NURSERY

SENIOR CITIZEN LOUNGE

LIBRARY

9 FLOORS

CLUBHOUSE AMENITIES

PRIMARK
INSPIRA
LIVE INSPIRED. LIVE ICONIC.



MULTI-PURPOSE HALL

SUPERMARKET

GYM

ROOF-TOP INFINITY POOL

SENIOR CITIZEN LOUNGE



OUTDOORS AMENITIES

FITNESS

YOGA LAWN
YOGA DECK
FITNESS STATION
CYCLING TRACK

SPORTS

MULTIPURPOSE COURT
CRICKET PRACTICE NET
VOLLEYBALL COURT
HALF BASKETBALL COURT
PLAY COURT

ENTERTAINMENT

PARTY LAWN
STAGE
AMPHITHEATER

LANDSCAPE

RAISED DECK
CENTRAL PLAZA
CENTRAL LINEAR WATER BODY WITH SCULPTURE
PLANTER BOXES
BLOCK ENTRANCE WATER BODY
BLOCK ENTRANCE CANOPY
SEATING DECK WITH COVERED STRUCTURE
LAWN FOR CLUBHOUSE
WATER BODY WITH SCULPTURE
PEDESTRIAN PATHWAY

KIDS ZONE

KIDS' SEATING AREA
CHILDREN'S PLAY AREA
SKATING RINK



BUILT TO
INSPIRE YOU 



BALCONY VIEW



PRIMARK
INSPIRA
LIVE INSPIRED. LIVE ICONIC.



SPECIFICATIONS

RCC FRAMED STRUCTURE

- RCC shear wall-framed structure.
- Solid brickwork in non-structural areas.

INTERNAL & EXTERNAL WALL FINISHES

- All internal walls are made of smooth-finish punning and acrylic emulsion paint from a reputed brand.
- The exterior wall has a textured finish with two coats of exterior emulsion paint from reputed brands with architectural features.

FLOOR FINISHES

- The drawing, dining, living, bedrooms, and kitchen are of 800x1600 mm size vitrified tiles of reputed make.
- The balcony, bathrooms, and utility areas have anti-skid vitrified tiles of reputed make.
- The corridor & lift lobbies flooring is with vitrified tiles of reputed make.
- Staircase with natural stone/granite flooring.

TOILETS CP & SANITARY FIXTURES

- Washbasin in each toilet.
- EWC with a flush valve of a reputed brand.
- Single lever wall mixer with bath spout and shower from a reputed brand.
- Provision for geysers in all bathrooms.
- All faucets are chrome plated by reputed brands.

DOORS & WINDOWS

- Main Door: Teak wood frame with threshold finished with polish.
- Teak veneer finished flush shutter with reputed hardware.
- Internal Doors: Hardwood frame finished with polish, teak veneer finished flush shutter with reputed hardware.
- UPVC Doors: UPVC sliding doors of reputed make with provision for mosquito mesh.
- Windows: UPVC sliding windows of reputed make with provision for mosquito mesh.

KITCHEN

- Granite platform and sink of a reputed brand shall be provided at extra cost.
- Kitchen dado of glazed vitrified tiles 3 feet above the platform.

ELECTRICAL & COMMUNICATION SERVICES

- All concealed items & modular switches are of reputed make.
- Power outlets for geysers in all bathrooms.
- Power outlets for the chimney, hob, refrigerator, microwave oven, mixer/grinder, and water purifier in the kitchen.
- Power outlets in all bedrooms & living areas for split ACs.
- Three-phase supply for each unit and individual prepaid meters.
- Miniature Circuit Breakers (MCB) of reputed make for each distribution board.

CABLE TV & INTERNET

- Provision for cable TV connections in the drawing/ living room and all bedrooms.
- Provision for one internet connection in the drawing/ living room and master bedroom.

LIFTS

- High-speed automatic passenger lifts with emergency rescue devices equipped with V3F for energy efficiency.

SECURITY SERVICES

- Round-the-clock security/surveillance system.
- Boom Barriers operate with automated RFID access.
- Surveillance cameras at the main security and at the entrance of the tower and other common areas.

LPG SERVICES

- Supply of LPG/PNG from the piped gas system.

WTP & STP SERVICES

- Treated water is made available through exclusive water softening.
- A sewage treatment plant of adequate capacity as per norms will be provided inside the project.
- Treated sewage water will be used for landscaping and flushing purposes.

FIRE FIGHTING SYSTEM

- Fire alarm systems and automatic sprinklers as per Fire Authority Regulations.

POWER BACKUP SERVICES

- 100% DG backup with an acoustic enclosure and automatic main failure.

CONNECTIVITY

IT HUBS

Hitec City	15 Mins
Raheja IT Park	20 Mins
Gachibowli	25 Mins
Financial District	30 Mins

EDUCATIONAL INSTITUTIONS

Gokaraju Ranga Raju College	5 Mins
Kennedy Global School	10 Mins
Silver Oaks Int. School	10 Mins
Mamata Medical College	10 Mins
Creek Int. School	15 Mins
Oakridge	20 Mins
Delhi Public School	20 Mins

SHOPPING MALLS

GSM Mall	10 Mins
Manjeera Mall	15 Mins
Nexus Mall	16 Mins
AMB Mall	20 Mins
IKEA	20 Mins

HOSPITALS

Srikara Hospital	5 Mins
Mamata Hospitals	10 Mins
SLG Hospital	10 Mins
KIMS	10 Mins
Rainbow Children's Hospital	15 Mins

NEARBY

DMart	2 Mins
Miyapur Cross Roads	2 Mins
Miyapur Metro Station	5 Mins
Lingampally Railway Station	15 Mins
ORR	20 Mins

LOCATION MAP (NOT TO SCALE)



ASSOCIATES

ARCHITECT	MEP CONSULTANT	STRUCTURAL & PMC	LANDSCAPE CONSULTANT	PROJECT FUNDED BY	CONCEPT & DESIGN BY

Note: This brochure is purely conceptual and not a legal offer. Area is tentative and actual areas arrived at completion of the flat may differ. The promoters reserve the right to make changes in the elevations, plans & specifications as deemed fit.

Contact: +91 9618 760 359 | +91 9581 988 359



SITE ADDRESS:

PRIMARK INSPIRA

Opp to DMart, Narenn Gardens
Miyapur, Hyderabad-500 049

CORPORATE OFFICE:

PRIMARK DEVELOPERS

3rd Floor, Artham's Arcade, Above Vijaya Diagnostic Centre
Raghavendra Colony, Kondapur, Telangana-500 084



T.S. RERA No.:
P02400006151

Concept & Design by
outlinemedia.in | **86860 86876**