

## POLAM LUXURY APARTMENTS



subishi's  
**POLAM**  
LUXURY APARTMENTS

- \* 10 Floors
- \* 3.6 Acre Layout
- \* 210 Luxury Flats
- \* 3BHK & 4BHK
- \* 1,780 - 3,400 SFT

SUBISHI POLAM

TS RERA REGISTRATION NO.: P02200003114

NA

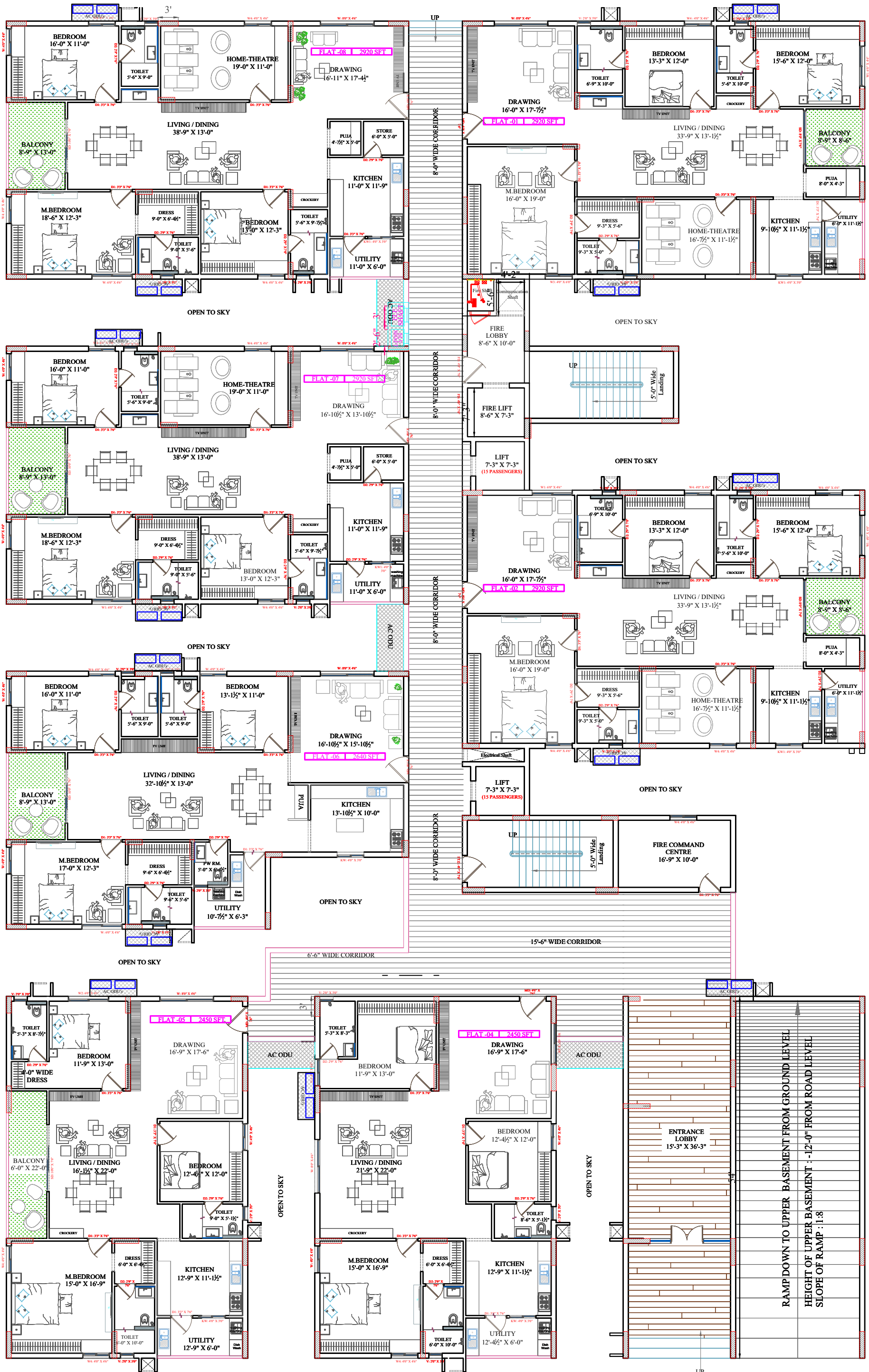


M/S SUBISHI POLAM



M/S SUBISHI POLAM

# BLOCK-A



RAMP DOWN TO UPPER BASEMENT FROM GROUND LEVEL  
 HEIGHT OF UPPER BASEMENT : -12'-0" FROM ROAD LEVEL  
 SLOPE OF RAMP : 1:8

West Facing  
Ground Floor  
2920 SFT  
Flat No. :-1,2



North Facing  
Ground Floor  
2450 SFT  
Flat No. :-4





East Facing  
Ground Floor  
2450 SFT  
Flat No. :-5



East Facing  
Ground Floor  
2640 SFT  
Flat No. :-6





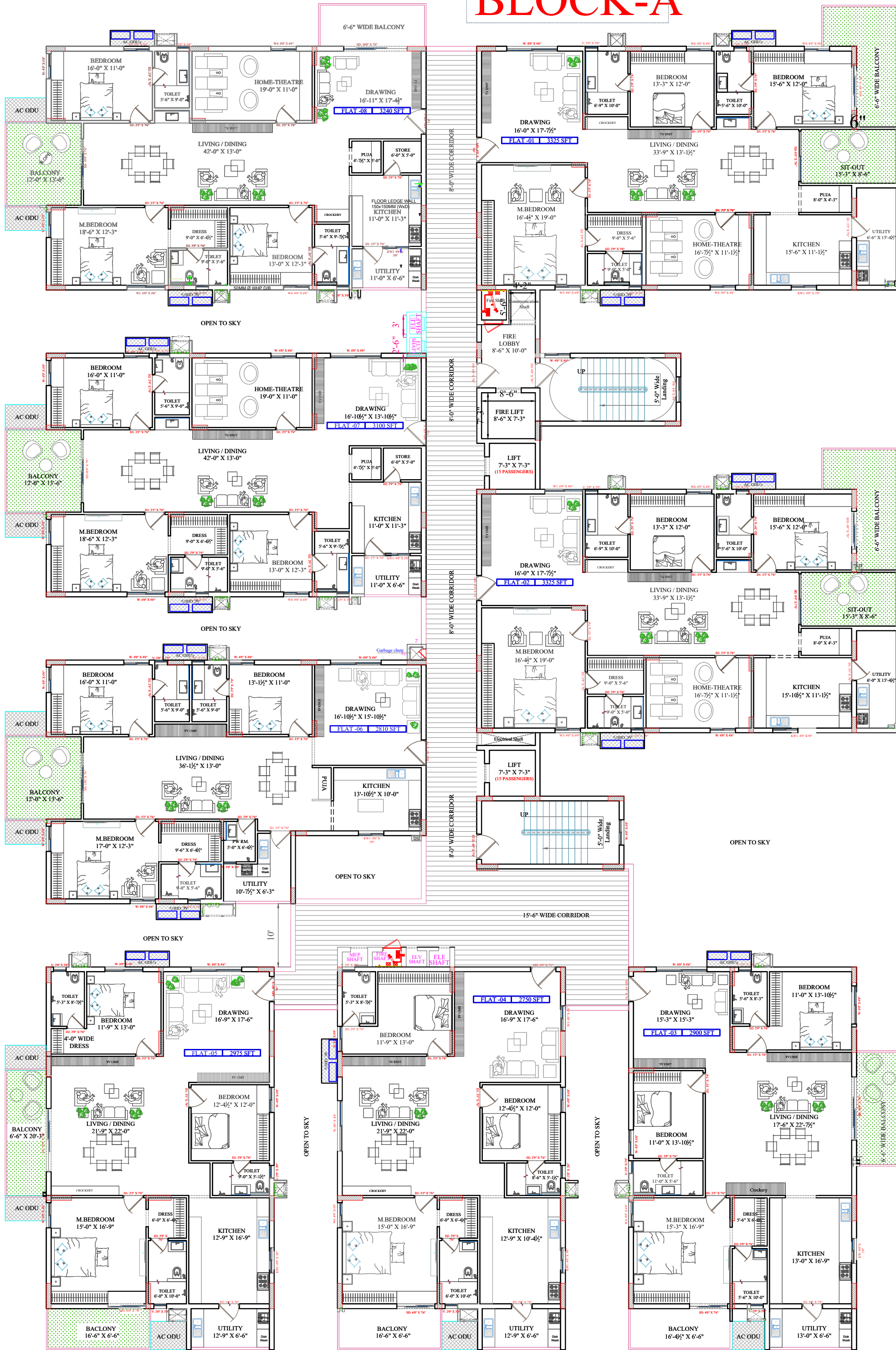
East Facing  
Ground Floor  
2920 SFT  
Flat No. :-7 ,8



West Facing  
Ground Floor  
2420 SFT  
Flat No. :-9



# BLOCK-A





West Facing  
3325 SFT  
Flat No. :-1,2



15'6" WIDE  
CORRIDOR

West Facing  
2900 SFT  
Flat No. :-3



North Facing  
2750 SFT  
Flat No. :-4





Flat no - 5  
East Facing  
3BHK 2975 SFT



East Facing  
2810 SFT  
Flat No. :-6





East Facing  
3100 SFT  
Flat No. :-7



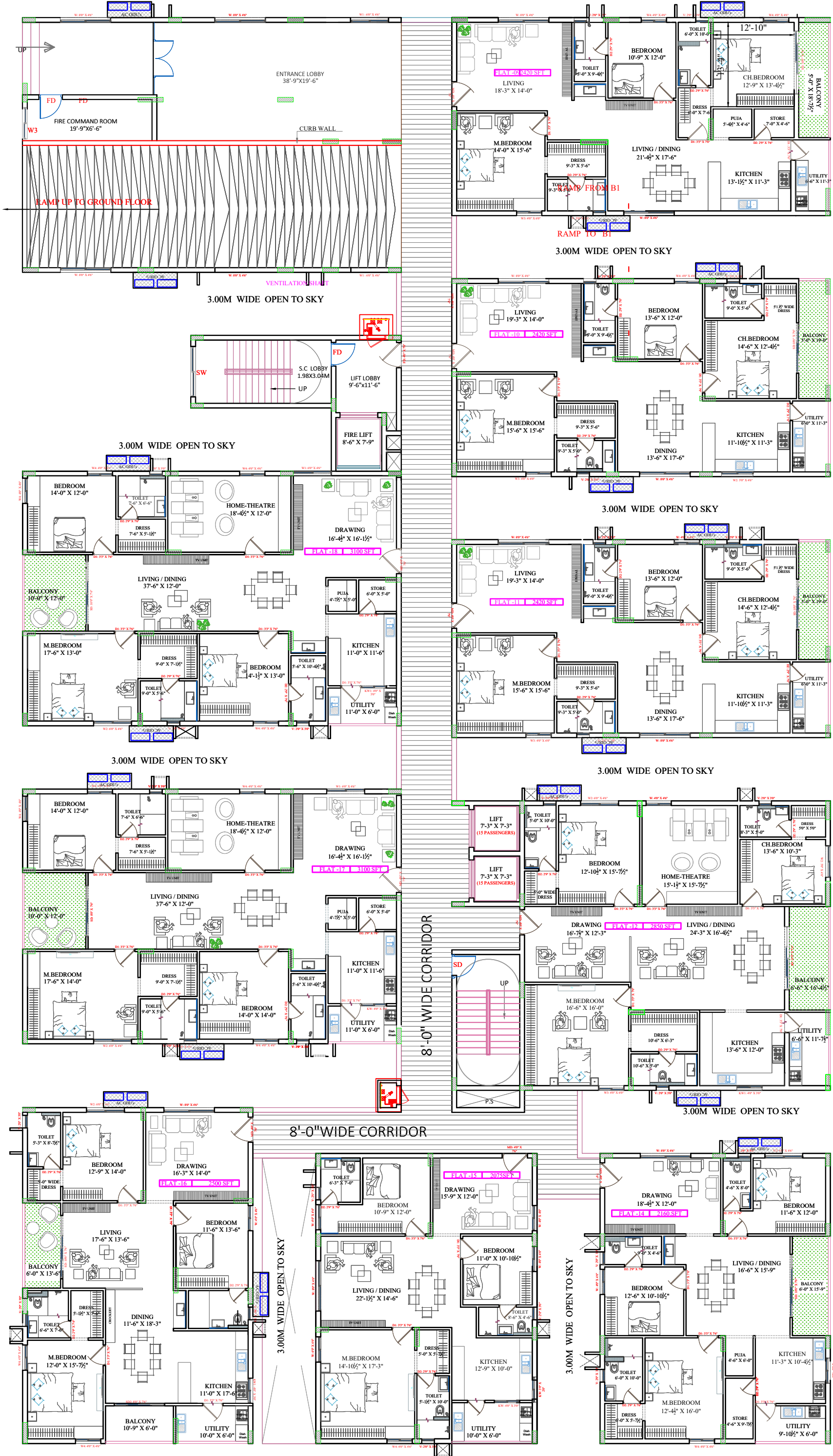


East Facing  
3240 SFT  
Flat No. :-8



8'0" WIDE CORRIDOR

# BLOCK-B



West Facing  
Ground Floor  
2420 SFT  
Flat No. :-10 ,11



West Facing  
First Floor  
2850 SFT  
Flat No. :-12



West Facing  
Ground Floor  
2160 SFT  
Flat No. :-14



North Facing  
Ground Floor  
2075 SFT  
Flat No. :-15

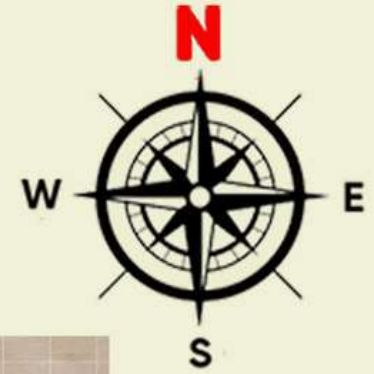


East Facing  
Ground Floor  
2500 SFT  
Flat No. :-16





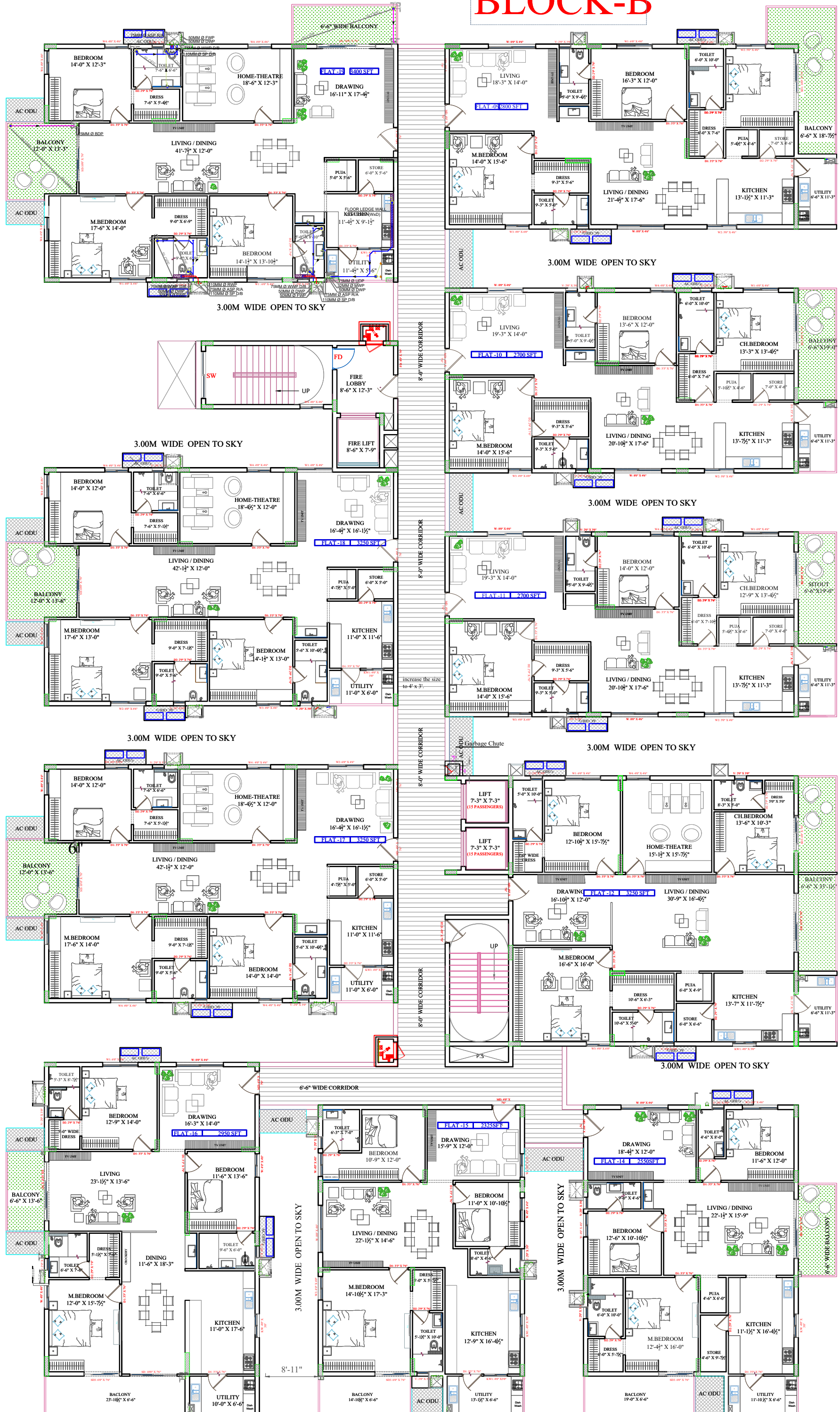
East Facing  
Ground Floor  
3100 SFT  
Flat No. :-17 ,18



East Facing  
First Floor  
3100 SFT  
Flat No. :-19



# BLOCK-B

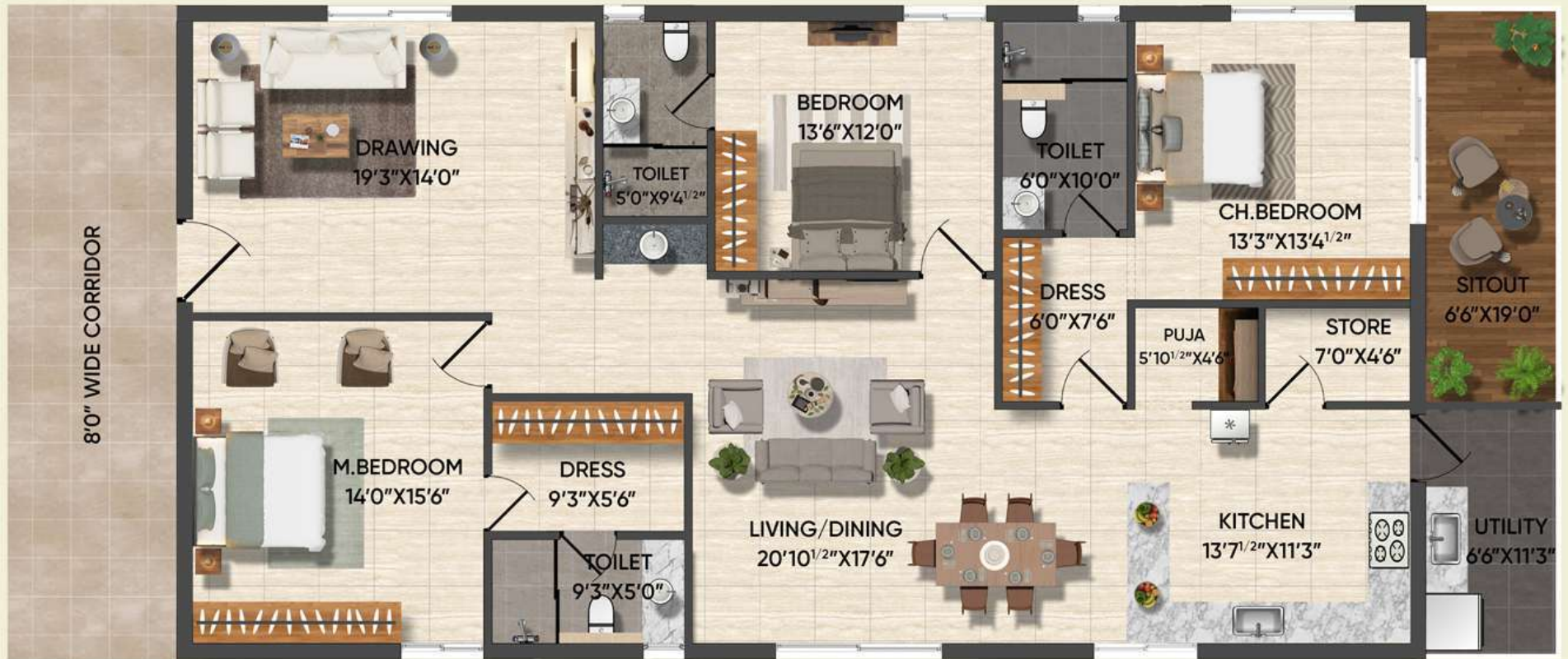




West Facing  
2800 SFT  
Flat No. :-9



West Facing  
2700 SFT  
Flat No. :-10 ,11



West Facing  
3250 SFT  
Flat No. :-12



West Facing  
2550 SFT  
Flat No. :-14

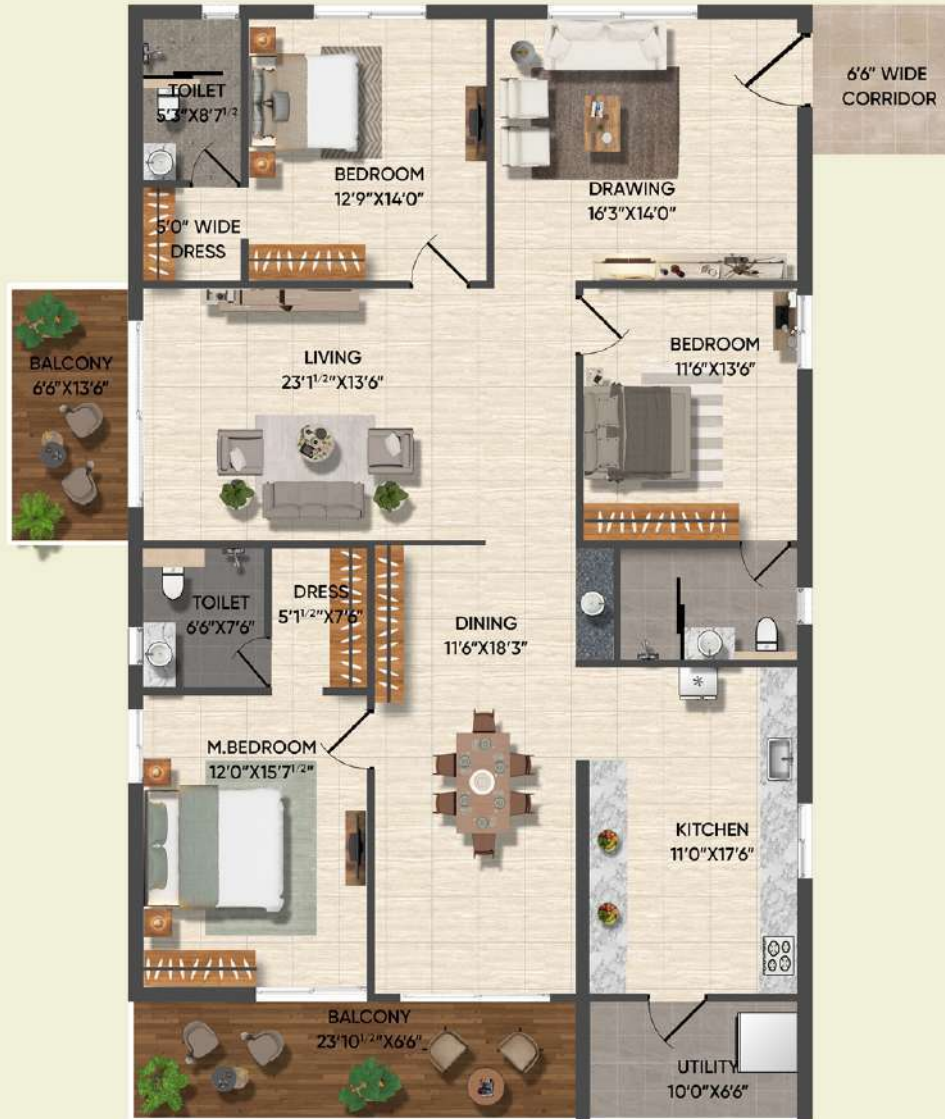


North Facing  
2325 SFT  
Flat No. :-15





East Facing  
2950 SFT  
Flat No. :-16



East Facing  
3250 SFT  
Flat No. :-17 ,18

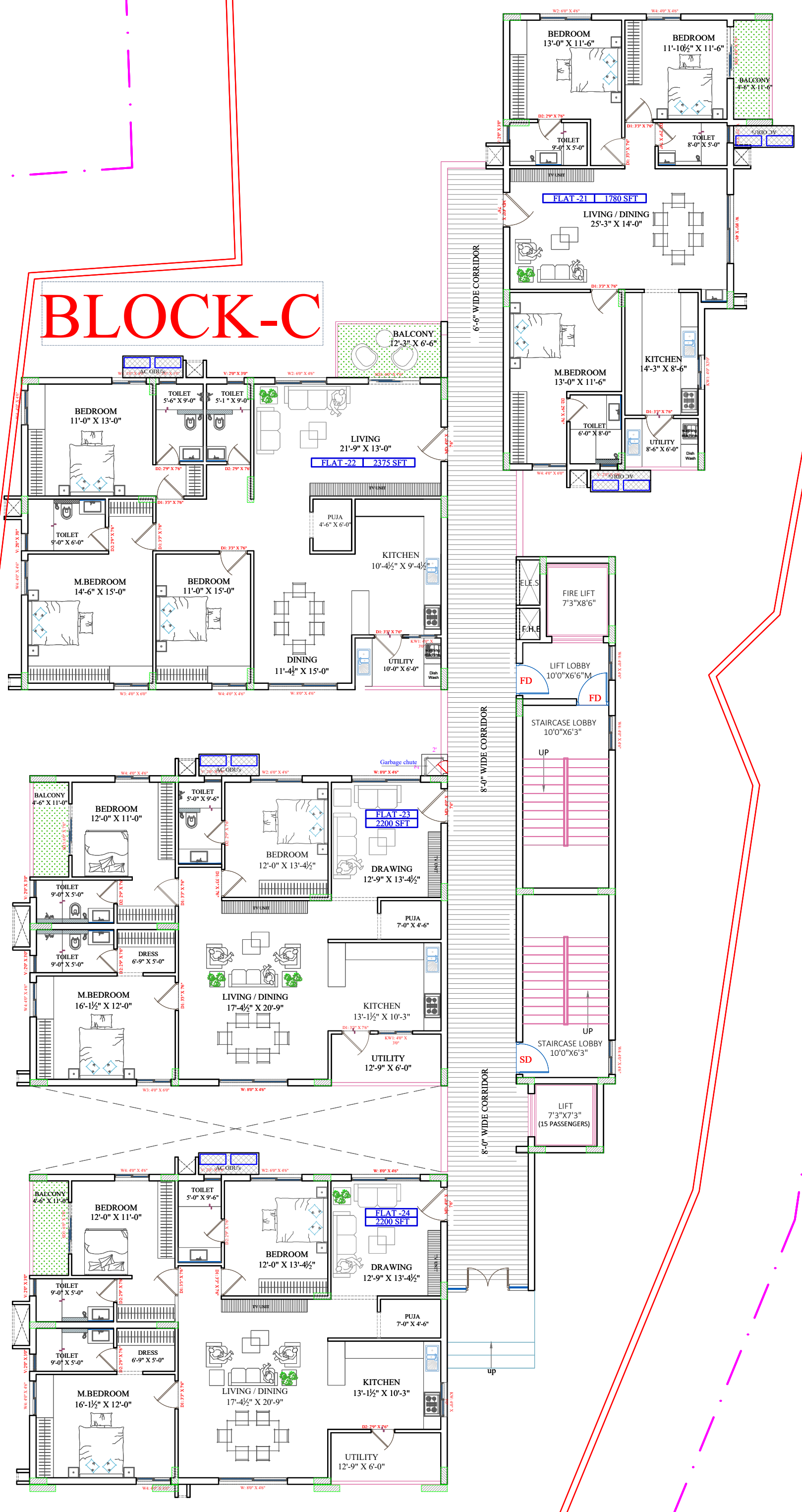




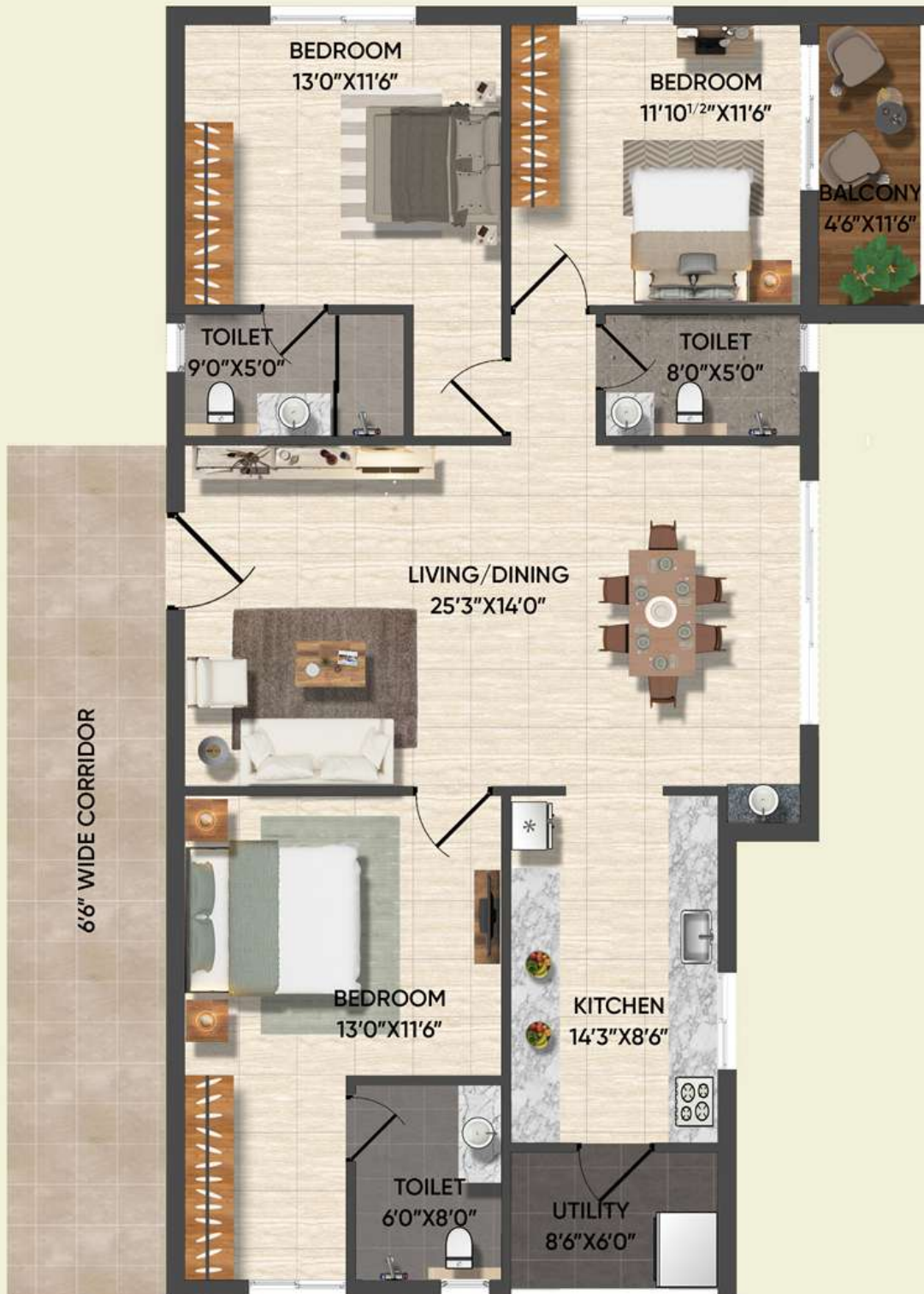
East Facing  
3400 SFT  
Flat No. :-19



# BLOCK-C

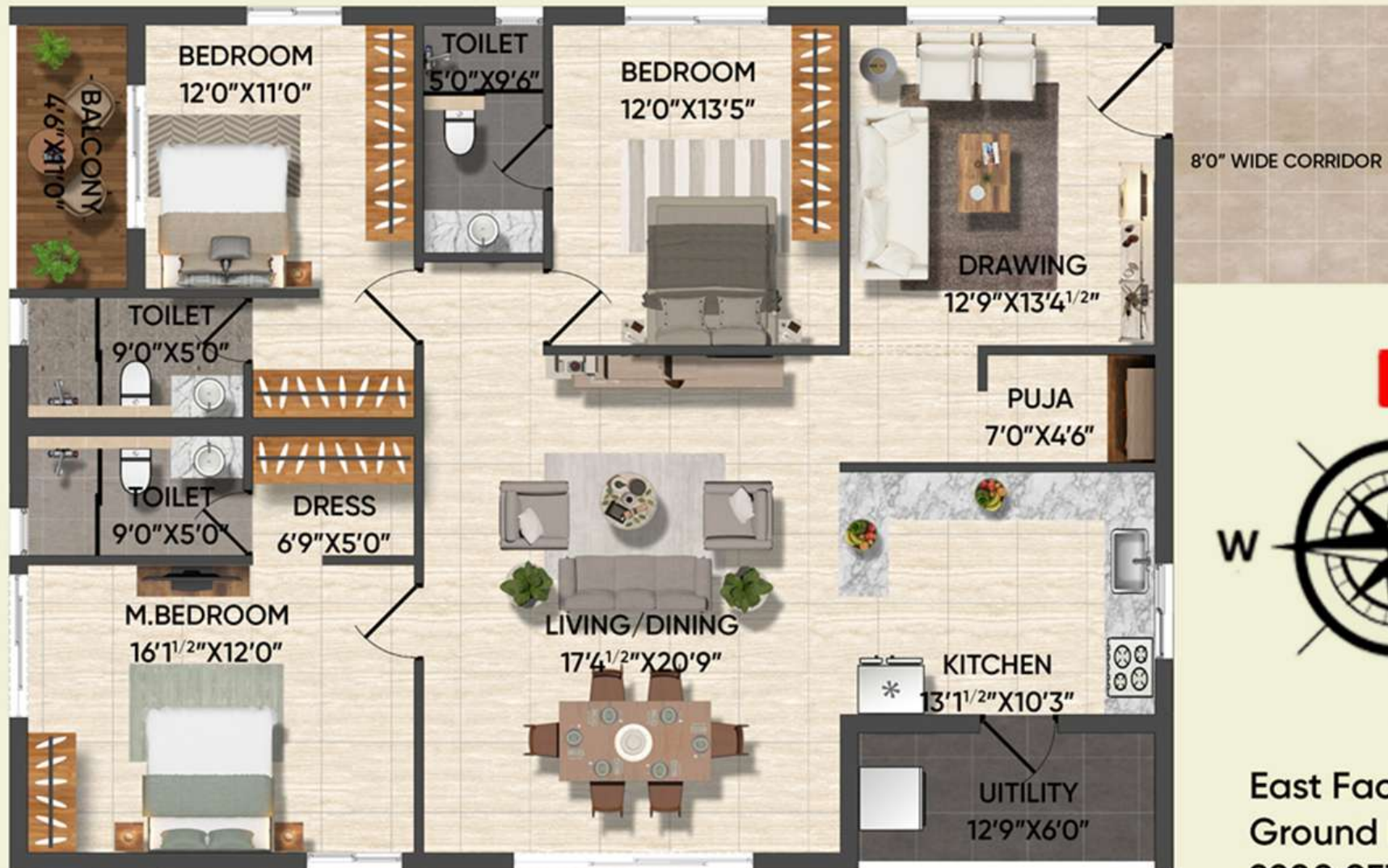


West Facing  
Ground Floor  
1780 SFT  
Flat No. :-21



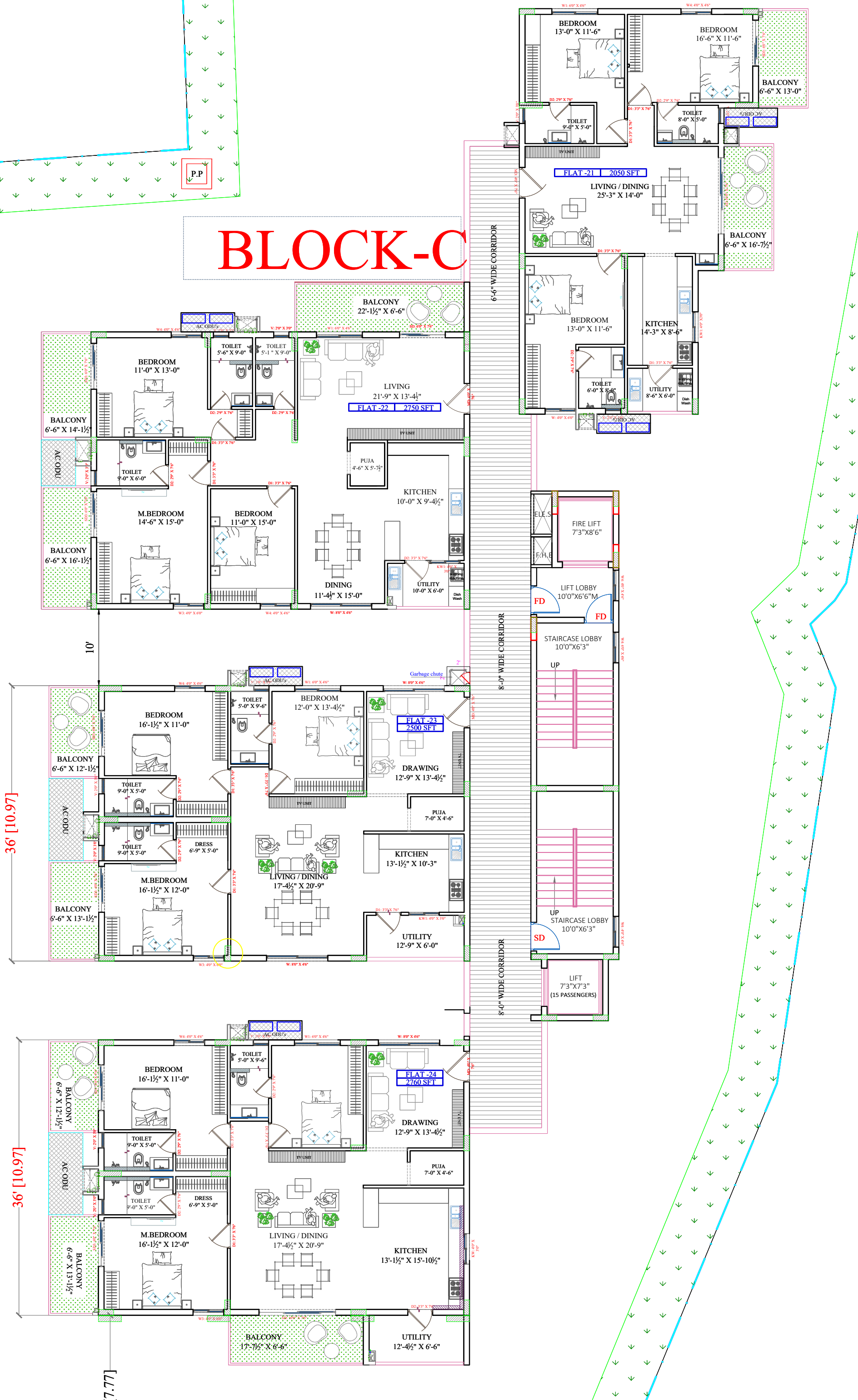
East Facing  
Ground Floor  
2375 SFT  
Flat No. :-22





East Facing  
 Ground Floor  
 2200 SFT  
 Flat No. :-23 ,24

# BLOCK-C





West Facing  
2050 SFT  
Flat No. :-21



East Facing  
2750 SFT  
Flat No. :-22

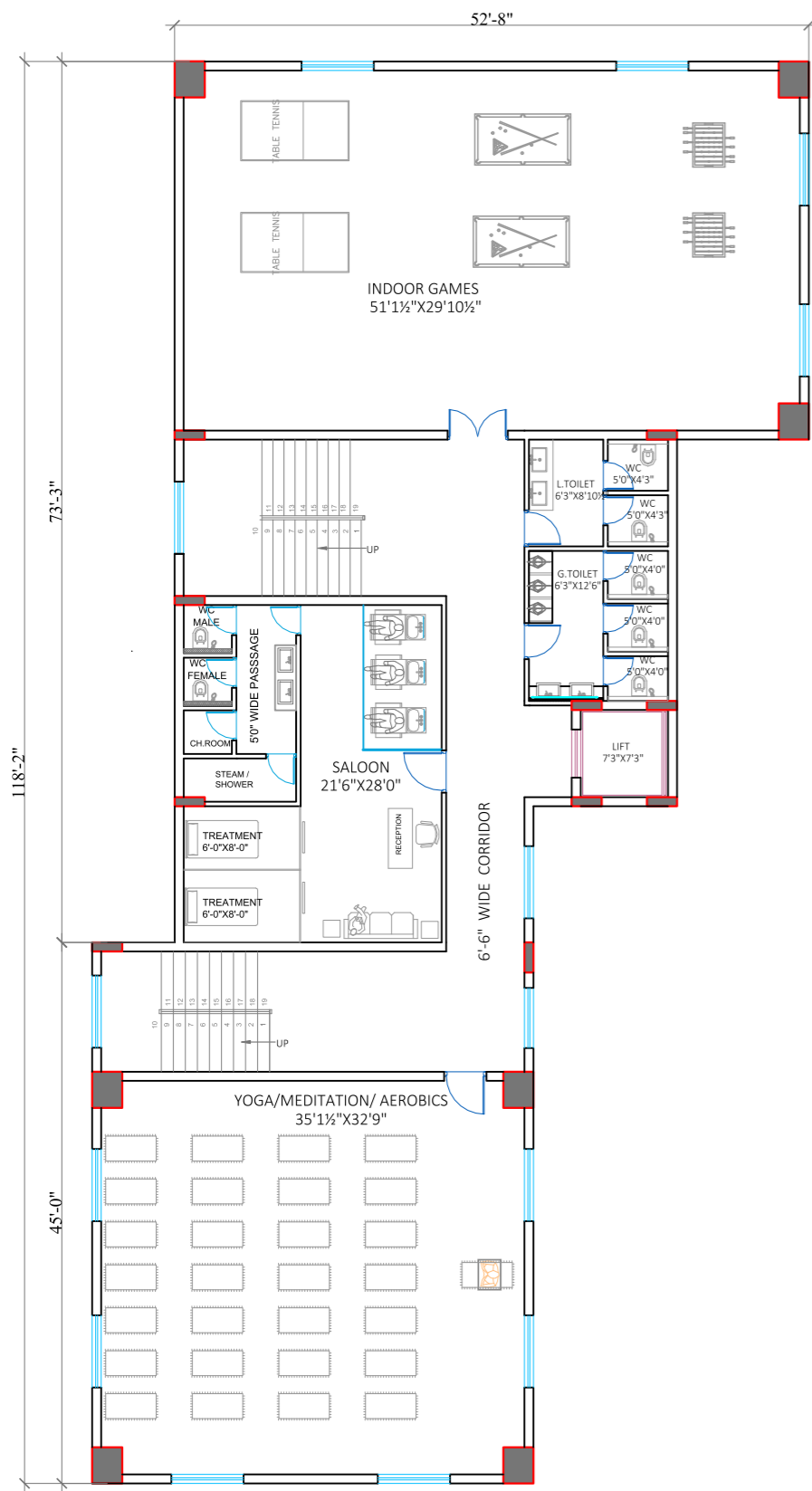


East Facing  
2500 SFT  
Flat No. :-23

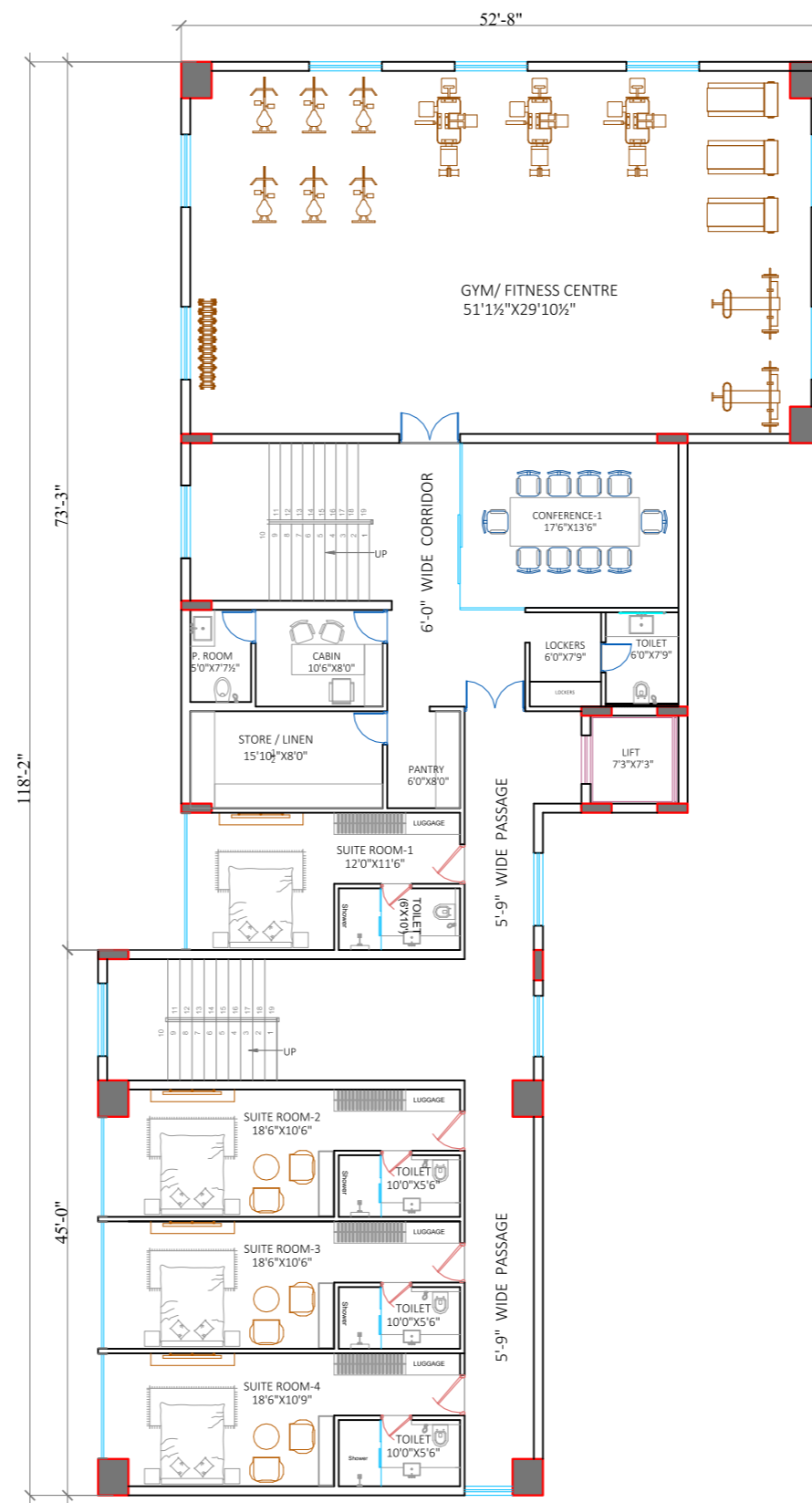


East Facing  
2760 SFT  
Flat No. :-24

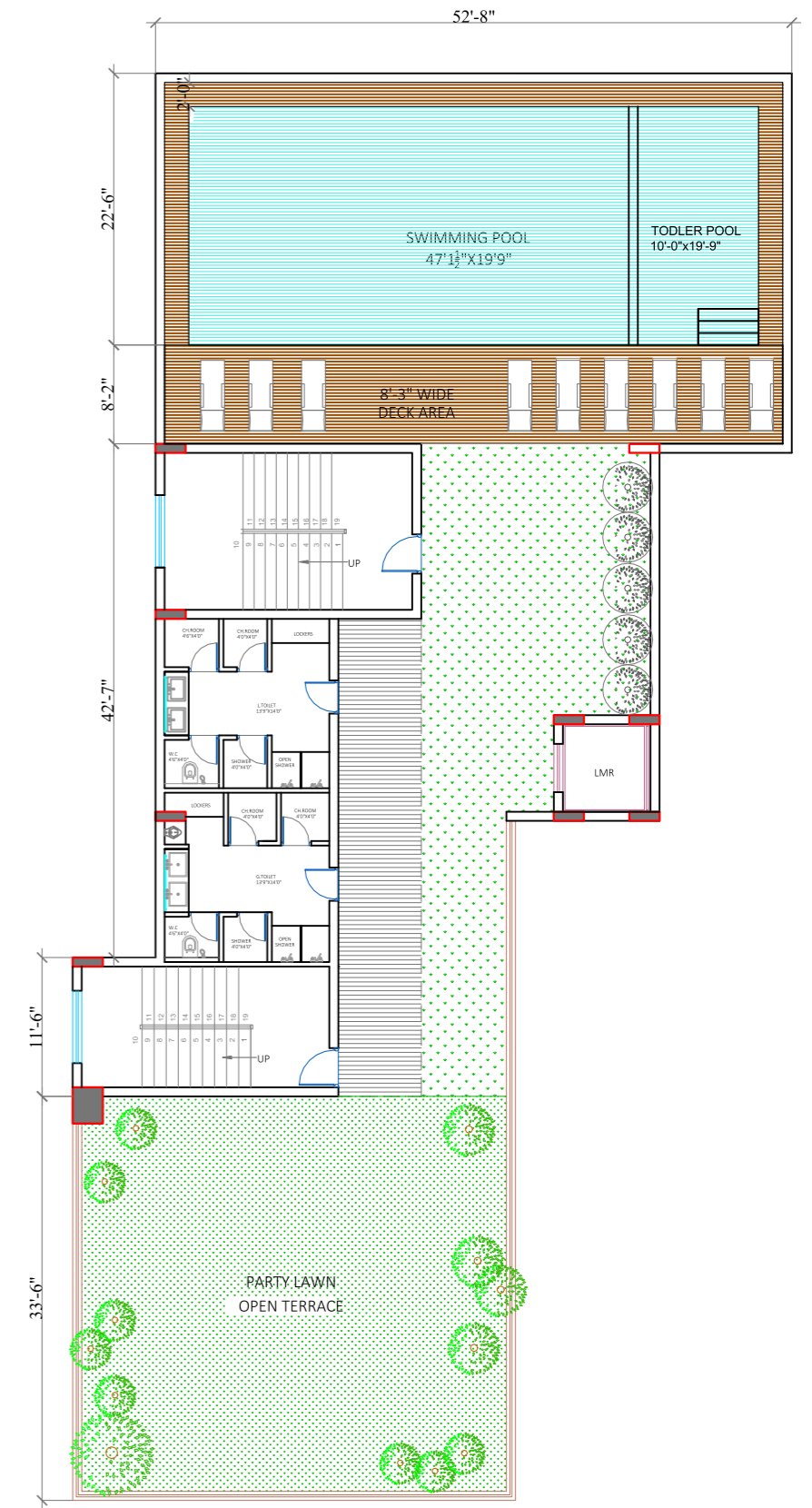




**THIRD FLOOR PLAN**



**FOURTH FLOOR PLAN**



**TERRACE FLOOR PLAN**

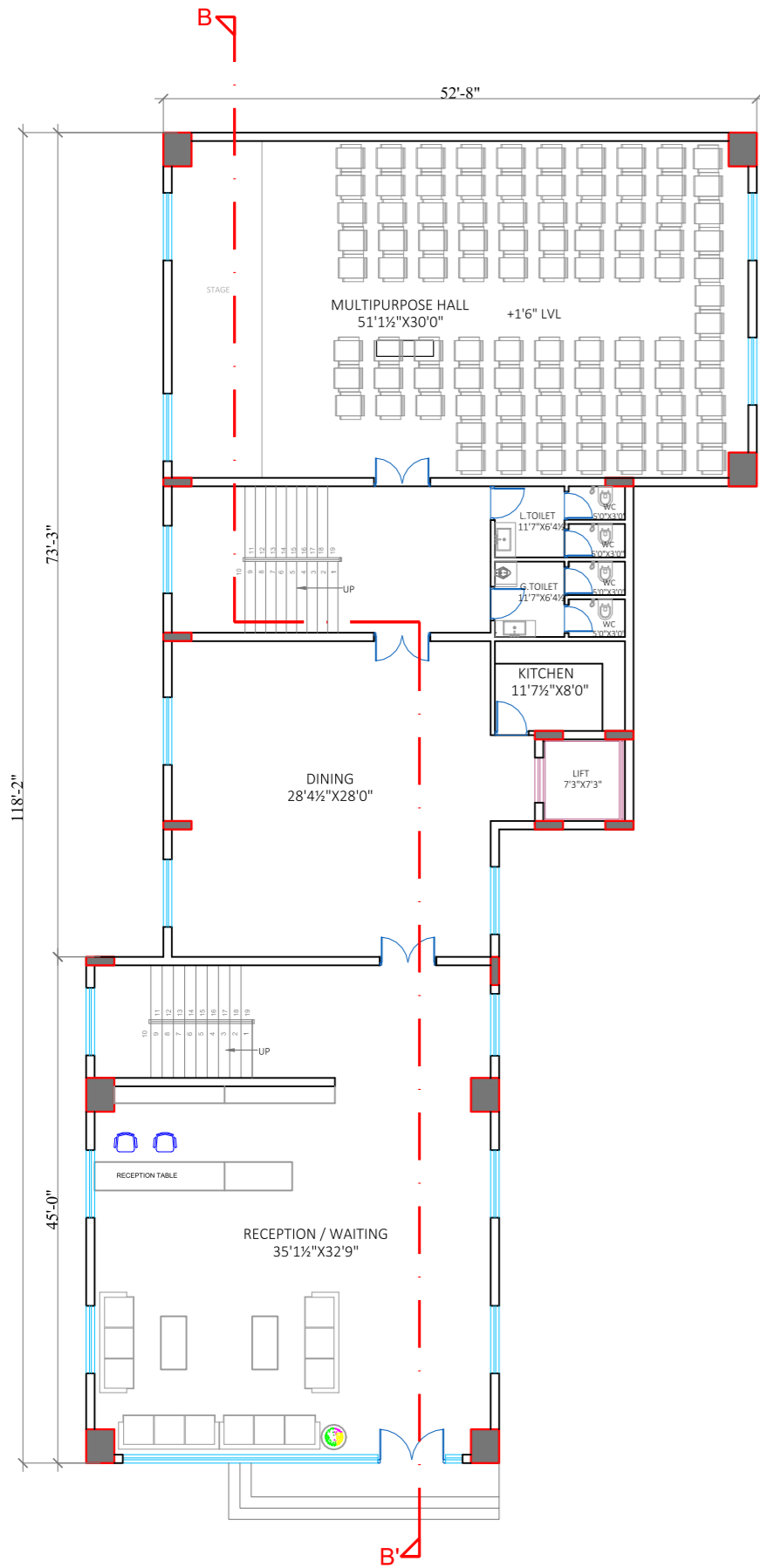


**NA ARCHITECTS**  
 Plot No.319/320, 6th floor, East Avenue,  
 Ayyappa Society, Madhapur, Hyderabad: 500081.  
 Tel : 040 23116454, 040-48526454, 040-48556454

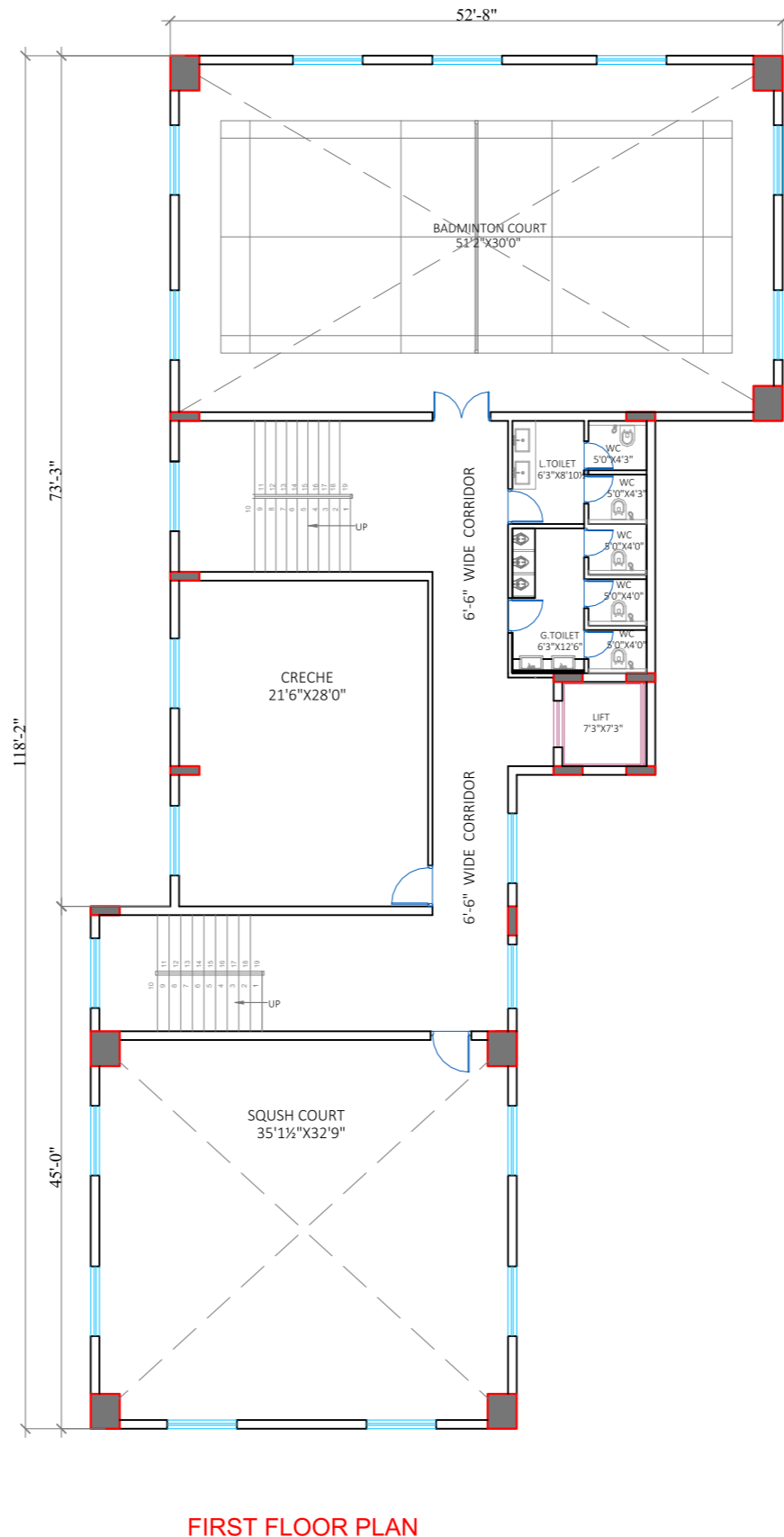
PROPOSED APPARTMENTS FOR SUBISHI ENGINEERS

CLUBHOUSE FLOOR PLANS

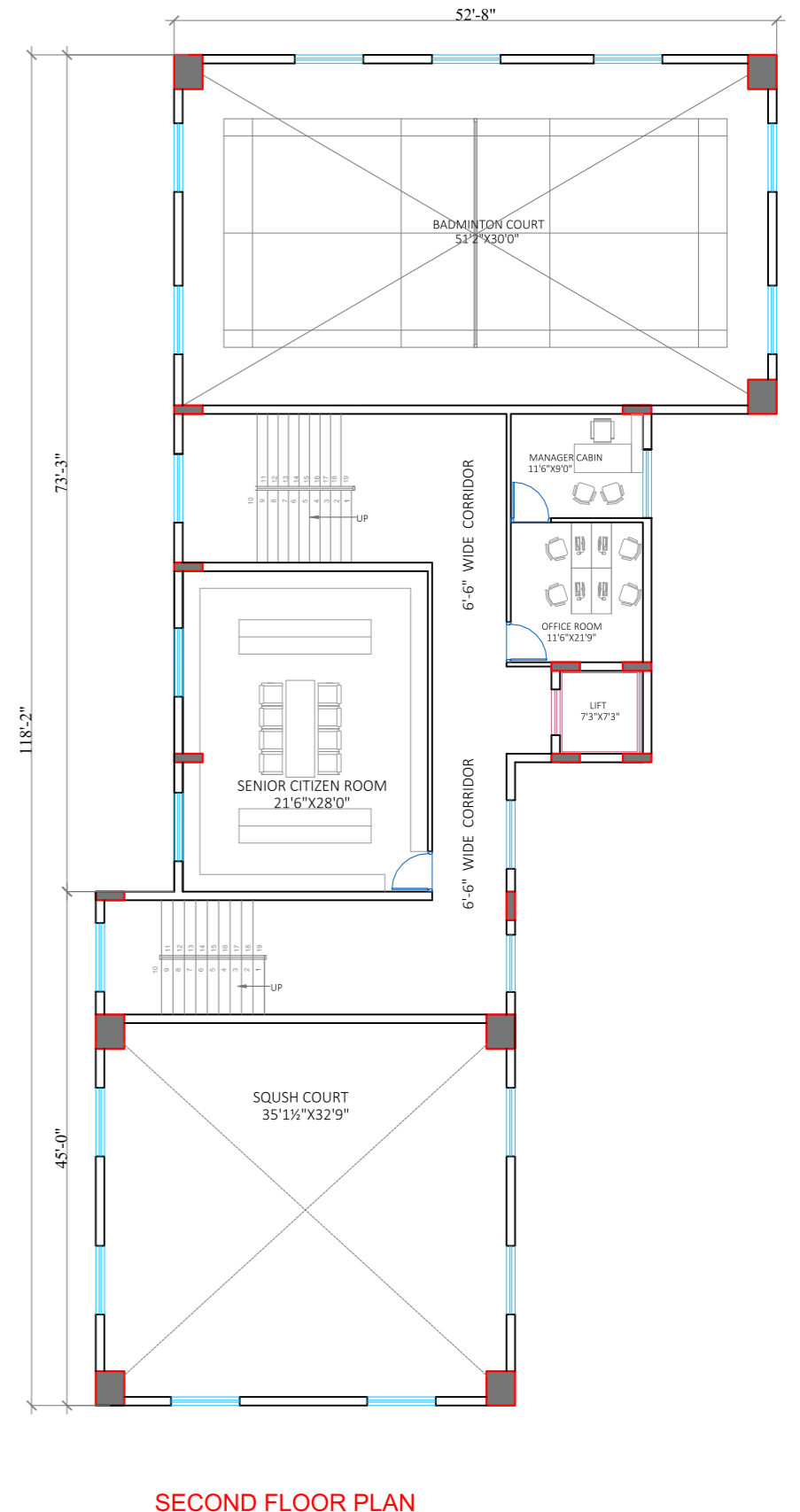
STAGE:  
 CONCEPT DESIGN  
 DATE:  
 29-08-2020



**GROUND FLOOR PLAN**



**FIRST FLOOR PLAN**



**SECOND FLOOR PLAN**



**NA ARCHITECTS**  
 Plot No.319/320, 6th floor, East Avenue,  
 Ayyappa Society, Madhapur, Hyderabad: 500081.  
 Tel : 040 23116454, 040-48526454, 040-48556454

PROPOSED APPARTMENTS FOR SUBISHI ENGINEERS

CLUBHOUSE FLOOR PLANS

STAGE:  
**CONCEPT DESIGN**  
 DATE:  
 29-08-2020